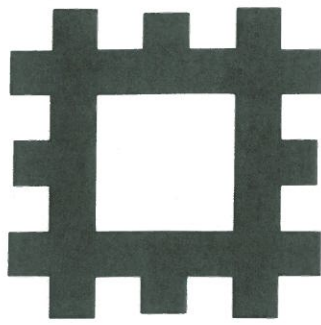


REMNANTS



Journal of the
English Heritage Education Service
No. 13 Spring 1991

Hands on history - make your own castle!

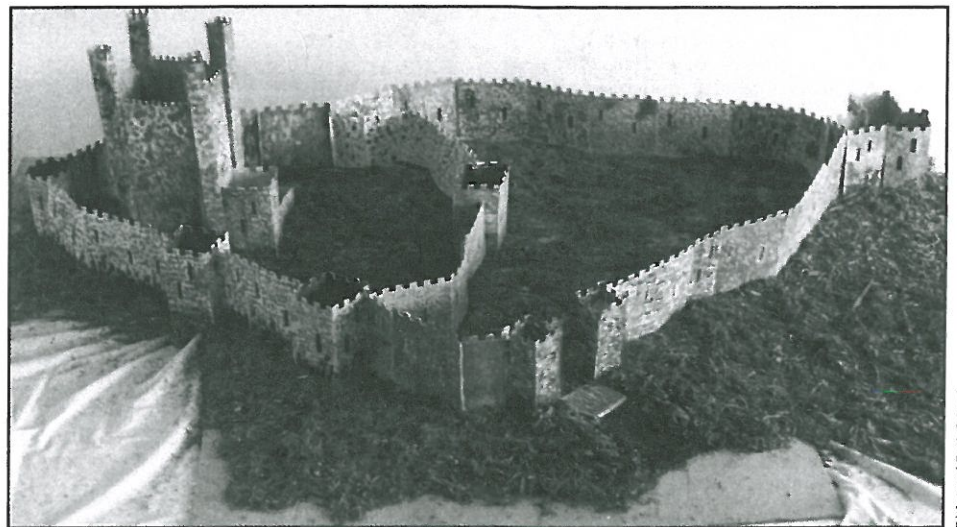

CAMPUS
2000

This exciting major cross-curricular competition project, set up by Campus 2000 and Data Design software with support from English Heritage, asked schools to build a three-dimensional model, to scale, of a real castle based on a series of clues. Rocks Park Primary School was one of the entrants.

There are very few people who are oblivious to the fascination of castles. We wonder about the paranoia of people in the middle ages that meant that so many people spent so much time, money and effort to build these huge, grey edifices. You only have to visit a castle to get a real insight into 'how we used to live'. This is the way we decided to start our topic that came to us initially via the project pack from Campus 2000. This pack contained so much information it took us a while to assimilate it all. One of the things that we really liked was that it started like this: 'Are you looking for innovative ideas to liven up your history lessons?

Have you thought about incorporating the use of Information Technology in history project work?

Well actually we were looking and we had used IT before — but nothing quite like E-



Model of Kenilworth Castle by pupils of Richmond Park School overall winners of the competition.

mail and Data Design's 'Designer Castles'. As the project pack went on:

'For those of you who may not be familiar with Data Design's software, it contains a variety of icons of standard castle features, such as towers, walls, gateways and buildings. Working entirely on the computer screen, students can create castle walls 'full frontal', which can be connected and manipulated in plan view. Castle designs of

any shape, size or complexity can then be printed out on paper, trimmed, folded and assembled into complete 3-dimensional models.'

This we had got to see. One of the really difficult aspects of the new curriculum is enabling the children to combine some of their activities together so that they cover everything. If it was possible to combine history, geography, IT, CDT and science in

Richmond Park School

INSIDE

**Resources Catalogue Update.
Doorstep heritage.**

National Curriculum Update

Regular readers of Remnants will be aware that the Education Service of English Heritage has responded in detail to the reports of the History and Geography Working Groups. Since the last issue of Remnants we have given our comments on the Secretary of State's proposals for History direct to the National Curriculum Council, and have just received the Draft Order.

Like many other people we are waiting to see what the final conclusions about history teaching will be. It is a pity that the process has taken so long. Once again, teachers will be asked to prepare for a new curriculum in too short a time.

Courses

Developing a School Designed History Study Unit

A course for teachers in Key Stage 2
Wednesday 6 March 1991 10.15am—
3.45pm.

Rangers House, Chesterfield Walk,
Blackheath, London SE10
Course tutor: Susan Morris
Bookings close: 26 February 1991

Using Rangers House we will go through the process of designing a unit that incorporates all the conceptual and practical elements required by the History National Curriculum.

Rangers House was first built in the late seventeenth century and extended in the eighteenth century. Its modest scale makes it easy for children to cope with. The eighteenth century interiors contain displays of old musical instruments, paintings, engravings and the Suffolk Collection of seventeenth century portraits.

To book a place contact: Jackie Moon,
English Heritage, Room 420,
Keysign House, 429, Oxford Street,
London W1R 2HD
Tel. 071-973 3648

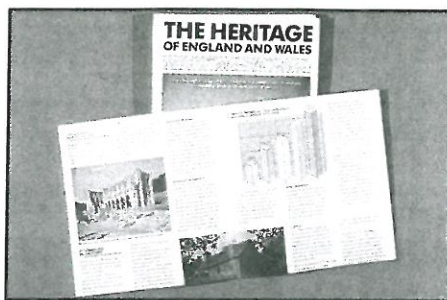
Standing stones and heavenly bodies
Leeds University Department of External
Studies Courses

Standing Stones and Heavenly Bodies
Saturday 9 March 1991, a day school

The Archaeologist as Detective: facts and finds
12-14 April 1991, a residential weekend at
York

History and Archaeology Summer School
20-27 July 1991, Sparsholt College,
Hampshire

For further details contact: Leeds
University Department Of External
Studies, Leeds LS2 9JT
Tel. 0532-333220



Environment In Trust

The Heritage of England and Wales is the latest in a series of free leaflets aimed at middle and secondary schools called 'Environment In Trust' produced by the Department of the Environment. One side of the poster format leaflet explores different aspects of heritage conservation, while the other has valuable factual details of protection under the law and the main bodies involved, including English Heritage.

Other titles available are The Countryside; Pollution Control Systems; Air Quality; River Quality; Clearer Seas, and Radioactive Waste Management. Free copies, up to a limit of 20, may be obtained from:

DOE Publicity Section
Victoria Road
South Ruislip
Middlesex



The Past Speaks Out

This competition organised by World Wildlife Fund UK, Shell UK Ltd. and the BBC invites teachers and pupils aged 7-16 to investigate their local environment and analyse, interpret and evaluate the impact of technological, land use and economic changes, and to present their findings in a 10 minute radio programme. The free Factfile contains information on getting started, plus eight subject guides and three case studies which form a useful resource for this and any other history project.

For a copy of the Factfile contact:

The Past Speaks Out
WWF UK Education
Panda House
Weyside Park
Godalming GU7 1XR

The Education Service

English Heritage remains committed to helping teachers with their work ahead by providing courses, advice and resources. Let us know how we can help you in your area.

Head of Education

Mike Corbishley
Room 116, Keysign House

Regional Education Officers

Gail Durbin, South East
Room 404, Keysign House
Greater London including our historic houses,
Hampshire, Isle of Wight, Kent, Surrey, East
and West Sussex.

Liz Hollinshead, Midlands and East Anglia
Room 410, Keysign House
Bedfordshire, Buckinghamshire,
Cambridgeshire, Derbyshire, Essex, Hereford
and Worcester, Hertfordshire, Leicestershire,
Lincolnshire, Norfolk, Northamptonshire,
Nottinghamshire, Shropshire, Staffordshire,
Suffolk, Warwickshire.

Ross Jellicoe, North
Bessie Surtees House
41/44 Sandhill Newcastle-upon-Tyne
NE1 3JF
Tel. 091-261 1585
Cheshire, Cleveland, Durham, Greater
Manchester, Humberside, Lancashire,
Northumberland, Tyne and Wear, Yorkshire
North, South and West.

Peter Stone, South West
Room 424, Keysign House
Avon, Berkshire, Cornwall, Devon, Dorset,
Gloucestershire, Isles of Scilly, Oxfordshire,
Somerset, Wiltshire

English Heritage has over 350 monuments open to the public. Schools can make a free educational visit to any of our sites provided this is pre-booked through the relevant area office at least two weeks in advance. Teachers can also arrange a free exploratory visit beforehand to prepare ideas for the main visit later. The Education Service aims to provide teachers with as much help as possible. If you have any requests for further information please contact us at:

**English Heritage
Education Service
Keysign House
429 Oxford Street
London W1R 2HD
071-973 3442/3
Fax 071-973 3430**

REMNANTS, the Journal of the English Heritage Education Service, is edited by Mike Corbishley (Head of Education) and Ken Glen (Education Administrator).
Text copyright is of individual contributors.
Designed by Alan McPherson.
Typesetting by Citytype, Leicester.
Printed in England by Hythe Offset Ltd.
ISSN 0269-9656
© English Heritage 1991